

How to replace the LED Strip

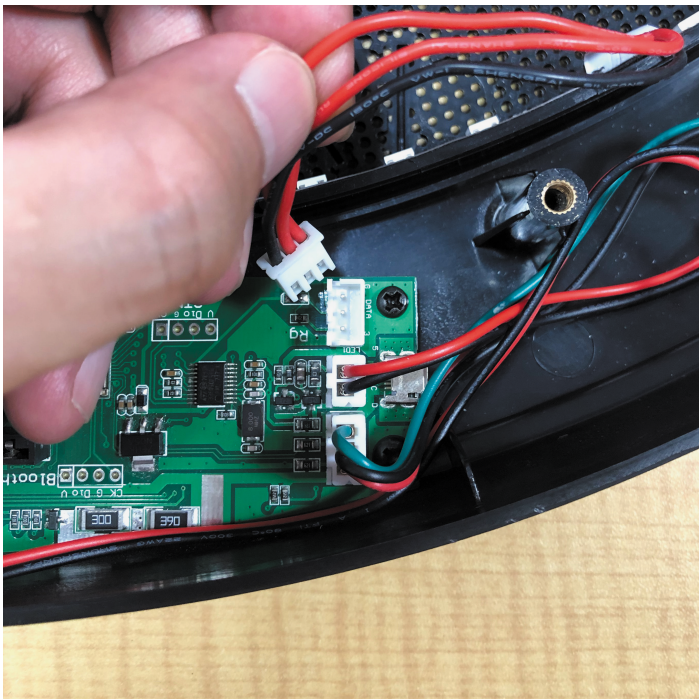
1:Remove 8 screws and the back cover on the back



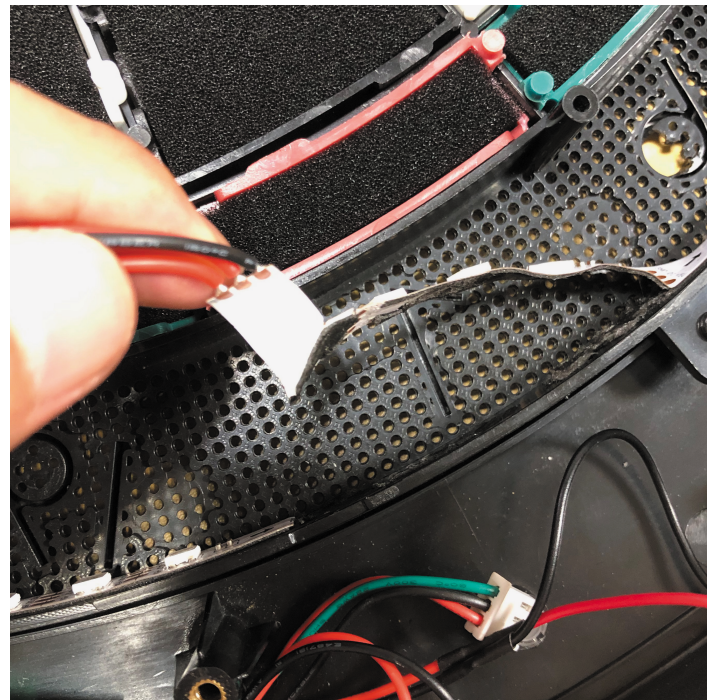
2:Remove the protective mat, sensor sheet, and rubber mat



3:Remove the LED connector from the PC board

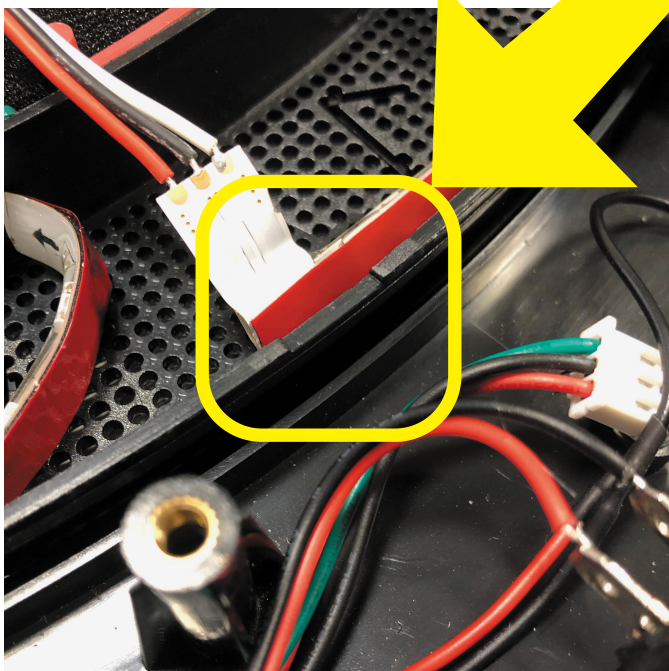


4:Remove the LED strip from the board



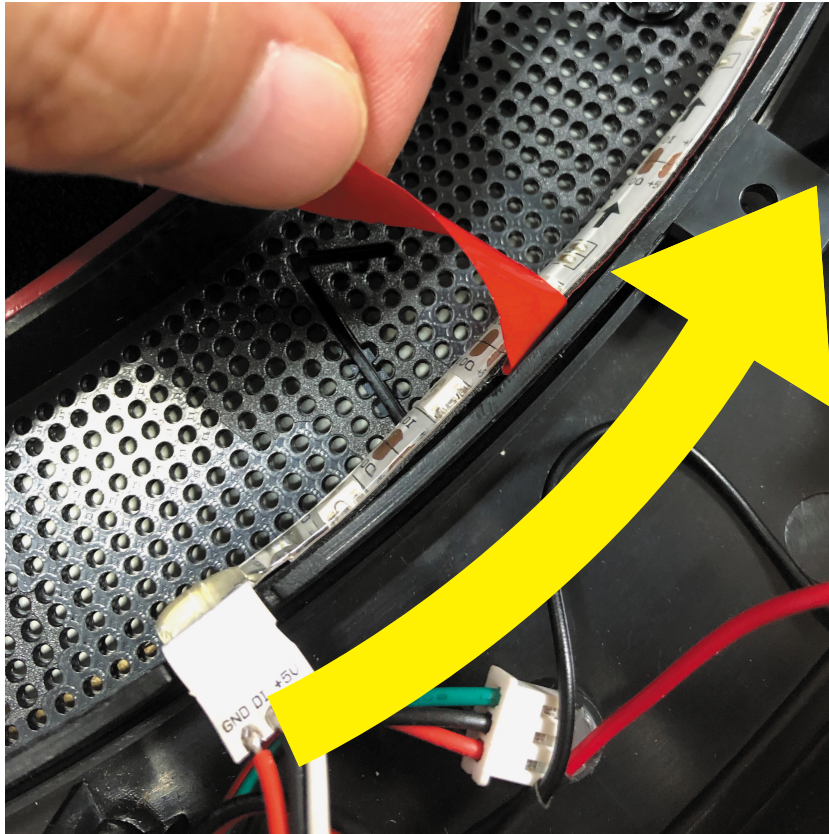
※Please do not leave double-sided tape on the board as much as possible.

5 : Temporarily place the LED strip according to the starting point.

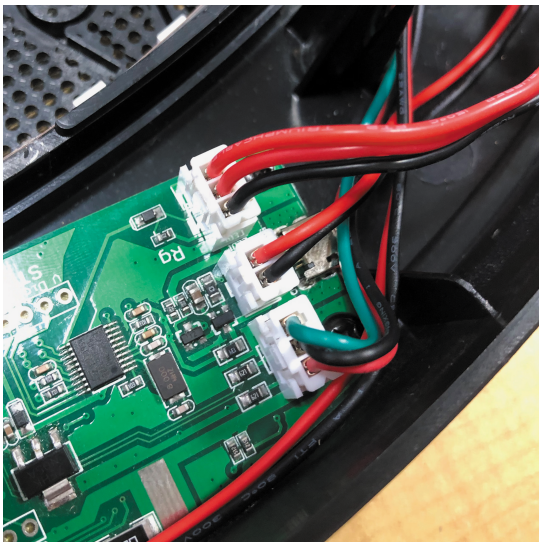


The starting point is recessed one step. Align the tip of the LED strip with the recess.

6:Please stick together while peeling off the protective film in the direction of the arrow.



6:Plug the connector into the PC board



7:Turn on the power and check the flash



8:Attach rubber mat, sensor sheet, protective mat and back cover.